

KITCHEN The main joinery is finished in two-pack polyurethane Dulux Palace Stone Half. Feature overhead cabinets in E veneer Ravenna. Super White Dolomite splashback and benchtops, CDK Stone. Dita stools, Grazia & Co. Pendant lights, Studio WM. Taps, Brodware and Zip. Appliances, Miele. Artwork from Studio ALM. Donna Green Crater bowl on bench, Utopia Art.



Stylist's assistants Luke Bonanno and Kylee Maki.

Friends indeed

Having faith in the talent of their creative circle paid off handsomely for the owners of this Sydney home.

STORY Sarah Pickette | STYLING Jack Milenkovic/Atelier Lab | PHOTOGRAPHY Dave Wheeler



A solid friendship that stretches back 20 years is the foundation upon which this Sydney house is built. Owner Jordan has been mates with architect Andrew Collins, a director of Canberra firm Collins Pennington Architects, since they met through a mutual friend during the Sydney Olympics. Factoring in this friendship, Andrew was the clear choice when Jordan and his wife Marije set about extending a cottage they bought in 2017 for their family of five. “Everyone warned us things can get tricky when you work with a friend ▶



COURTYARD Landscape design by Durie Design. Trace outdoor sofa, coffee tables and drinks trolley, all by Adam Goodrum for Tait. Timber bowl, Studio ALM. Jurassic French limestone pavers, Barefoot Living. **DINING** Trapeze 10 pendant light, Apparatus. Dining table, ARP Design Studio. Vessels on table by Kirsten Perry, from Michael Reid Clay. Zanotta console, Cult. On console (from left) Susan Chen vessel from Curatorial+Co, Tacchini vase from Stylecraft, Tracey Lamb sculpture from Curatorial+Co and Foscarini table lamp, Space.

“FROM THE FRONT DOOR, YOU CAN LOOK SOUTH TO THE HARBOUR OR NORTH THROUGH TO THE LEAFY COURTYARD.” Andrew Collins, architect

and money is involved,” says Jordan, “but the friendship between Andrew and I was strong and it remains so. I also know Andrew is an exceptionally good architect. We had inherent trust in him from the beginning.”

Having moved back to Australia after working in Europe for many years, the family purchased this home, in part, for its proximity to a ferry wharf. “Jordan and Marije approach life from a very European perspective,” says Andrew. “It was important to them to be close to public transport. They’re people who are happy to embrace public amenity over private - they see no need for a big backyard when there’s a park and beach nearby.”

While Jordan and Marije were keen to honour the heritage of the 1905 cottage, they also needed more space for their three sons, Oscar, 12, Samuel, 10, and Boris, six. Andrew’s solution was to enhance the structure that was already there by adding a zinc-clad, double-storey extension within the existing footprint.

“We decided to excavate under the house to improve the connection between the home and garage,” says Andrew, who designed a staircase that doubles as a light well, ▶



“COMFORT WAS OUR TOP PRIORITY IN THE LIVING AREA. IT’S A SPACE WHERE WE DECOMPRESS.” Jordan, owner

THE PALETTE

Resene Double Alabaster (interior walls)	Resene Grey Friars (window frames and trim)	Resene Sea Fog Half (window sashes and eaves)
--	---	---

LIVING Above and opposite An artwork by Dutch photographer Marjan Teeuwen presides over the Arflex ‘Marenco’ sofa and B&B Italia ‘Fat Fat’ tables from Space. &Tradition ‘Boomerang’ armchairs, Cult. Sculptures by William Versace through Curatorial+Co (above), Gidon Bing, Lionel Smit and Grant Maxwell, all through .M Contemporary. Ludavico & Ludovico artwork over the Escea fire by Retna and to its right is a painting by Clara Adolfs. **STAIR** The beautiful ribbon-like staircase is finished in Dulux Harbour Bridge Grey. Street artist Vexta was commissioned to paint straight onto the wall. Standley wall light, Rakumba. Sculpture on landing by Donna Green at Utopia Art.



Paint colours are reproduced as accurately as printing processes allow.

FAMILY BATHROOM Sticks finger mosaics in Emerald and honed terrazzo, all Barefoot Living. Zuster 'Issy Halo II' vanity and Agape 'Unisono' basins from Reece. Brodware fixtures, Candana. **MAIN BEDROOM** SOS artwork by Nemo Jantzen at .M Contemporary, Bedlinen, Cultiver. **ENSUITE** Striking Cote D'Azur marble from CDK Stone is teamed with Talisman sconce lights by Apparatus. Zellige tiles, Barefoot Living. **PORTRAIT** Jordan and Marije with their sons (from left) Oscar, Samuel and Boris, plus toy cavoodle Billy-Bob.

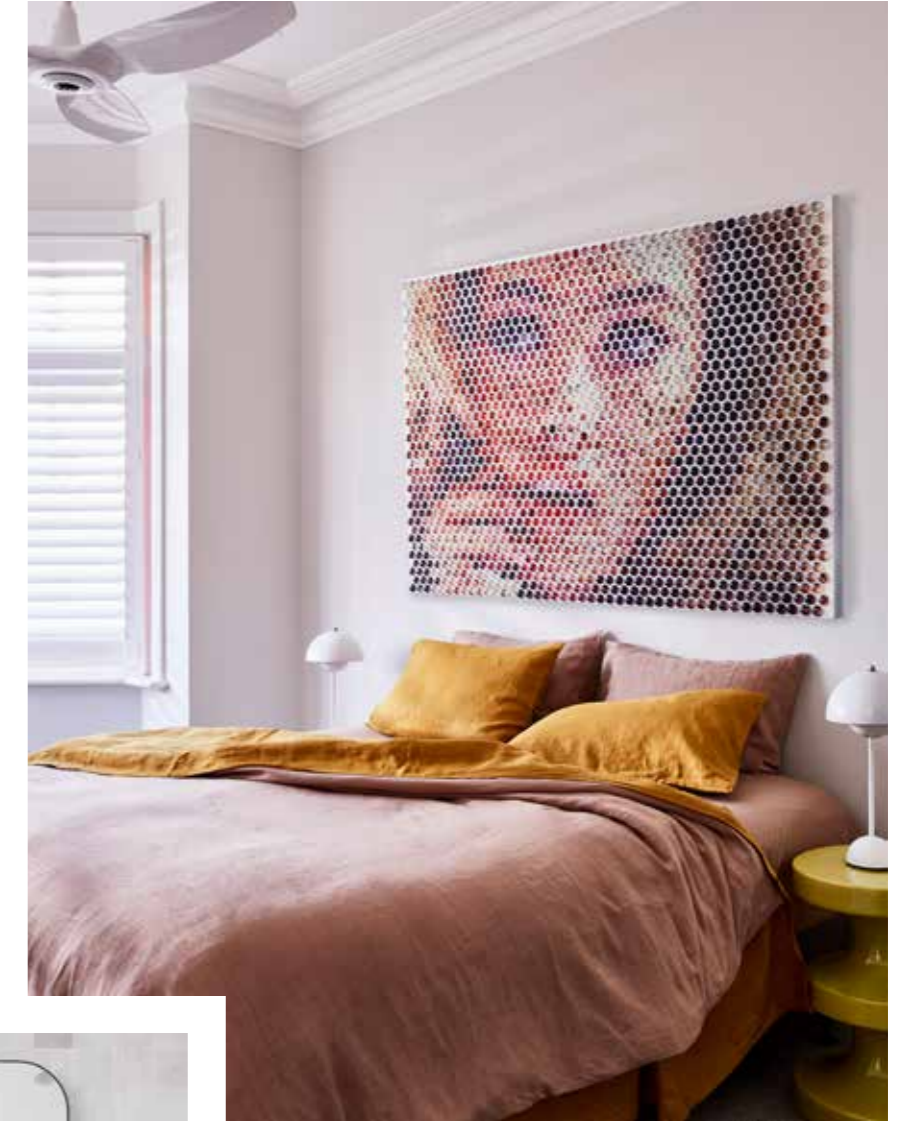


making every level feel that much brighter. "Going in under the existing house also allowed us to create a wellness area with a sauna in the basement."

From the home's entrance, there's a view right through to the green-walled courtyard by Durie Design (landscape designer Jamie Durie is another of the couple's creative acquaintances). The main bedroom is situated in the existing structure, along with one of the boys' bedrooms, but then the house opens out into the new living, dining and kitchen areas - all with glimpses of that spectacular staircase.

In the kitchen, a 4-metre-long island is topped with family-friendly Super White Dolomite and features a striking shadowline effect. "This detailing allows the stone to be the star rather than simply butting into the surrounding joinery," says Andrew.

Stunning stone and tile selections made by interior designer Megan Brown of Penman Brown Interiors - another friend of the family engaged to work on this project - elevate the ensuite, family bathroom and powder room. "For the ensuite, I chose a heavily veined Cote D'Azur marble for its fantastic energy," says Megan. "Everything else in the room is ▶



very minimal and soft.” In the family bathroom, Andrew included a clerestory window to capture glimpses of the original brick chimney from the bath. “It’s nice to be able to incorporate the home’s history into new rooms,” he says. “It might be a small detail but it can speak volumes.”

The dining area, part of an open-plan space, is punctuated by a picture window with views to the green wall. Designed as a space for relaxation and conversation, the living area is primarily used by the grown-ups. For the kids, there’s a rumpus room downstairs plus a breakout space on the first floor where they can game

away on their PlayStation. The top-floor study morphs into a guestroom when friends or family come to stay.

With its nooks, angles and graceful design, it feels like there’s much more to the house than there actually is, says Jordan. “The footprint we were working with was quite small, but Andrew has created the maximum useable space for us. The design is tight and efficient but still flows intuitively.”

H&G
Collins Pennington Architects, Griffith, ACT; collinspenningtonarchitects.com.au. Penman Brown Interior Design, Manly, NSW; penmanbrown.com.

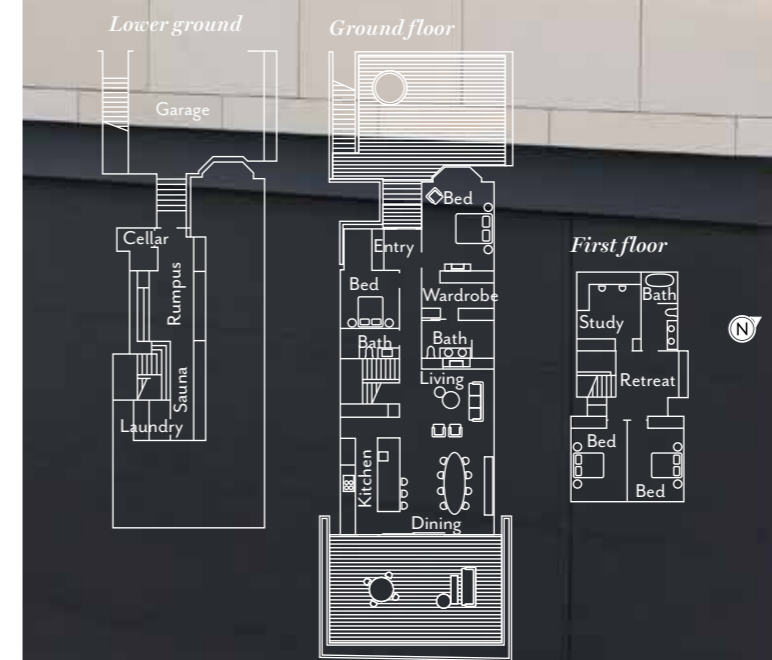
“JORDAN ALWAYS TELLS ME HOW MUCH HE ENJOYS LIVING IN THE HOME. FOR ME, THAT’S WHAT IT’S ALL ABOUT.” Andrew Collins, architect

THIS IS THE LIFE

“We’ve lived in Paris and Amsterdam, and we now reside in a densely populated part of Sydney,” says Jordan. “Despite that, our home feels very private, almost like a resort. I think a lot of that feeling comes from the courtyard and its green wall.” Jordan and Marije requested that the new materials be allowed to age naturally. “We’ve left the deck to silver and the zinc to fade; this is our nod to our time in Paris and the zinc rooftops you see there.”



THE LAYOUT



EXTERIOR The bold rear extension is clad in zinc from CASA Group. Walls of the existing house painted Resene Black White. **POOL AREA** The green wall by Durie Design includes bird’s nest ferns, New Zealand rock lily, Brazilian jasmine, coastal rosemary and liriopse. Tidal outdoor dining setting, Tait. Ann Demeulemeester stand, plate and glassware, Spence & Lyda. Curvy sculpture by Sophie Nolan from Michael Reid Clay. *For Where to Buy, see page 192.*